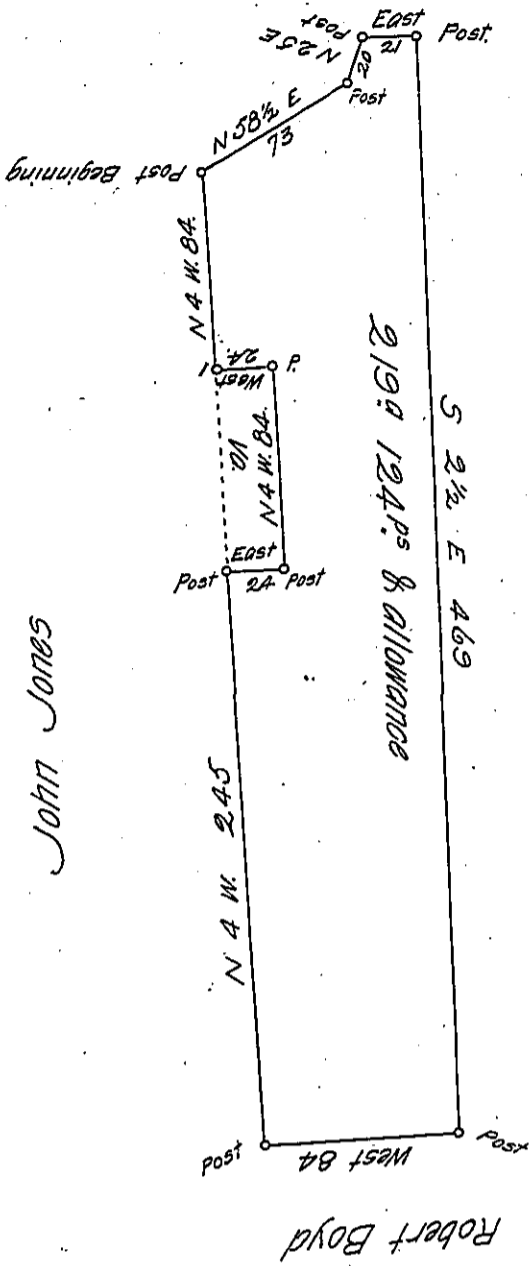


Lawrence ✓

Robert Davidson



The above is a Draft of a Tract of Land Surveyed May the 4th 1815 in pursuance of a Warrant Granted to John Nawgle dated the Sixth day of February 1815 Situate in Big Beaver Township Beaver County Containing 219 Acres 124 perches and allowance of six per Cent & c.

I, Hugh McCullough D.S. do hereby Certify that there was an Actual resident Settlement on the Land at the time of Survey.

Hugh McCullough D.S.

To Richd T. Leech Esq. }
Surveyor General

IN TESTIMONY that the above is a copy of the original remaining on file in the Department of Internal Affairs of Pennsylvania, made conformably to an Act of Assembly approved the 16th day of February, 1833, I have hereunto set my Hand and caused the Seal of said Department to be affixed at Harrisburg, this nineteenth day of February 1906.

Loacn Brown
Secretary of Internal Affairs.